



EN 166 : 2001



- GB Eye Protectors
- DE Schutzbrillen
- BG Протектори за очи
- CZ Ochranné brýle
- DK Beskyttelsesbriller
- ES Protector Ocular
- FI Silmäsuojaimet
- FR Lunettes de protection
- GR Γυαλιά προστασίας
- HU Védőszemüvegek
- IT Occhiali protettivi
- KL Κραγιάνια κωλύστρια
- NL Veiligheidsbrillen
- NO Øyverne
- PL Beskyttelsesbrille
- PT Óculos de protecção
- RO Ochelari de protectie
- RU Очки защитные
- SE Ögonskydd
- SK Ochrana očí značky



D01 DSTU EN166-2001



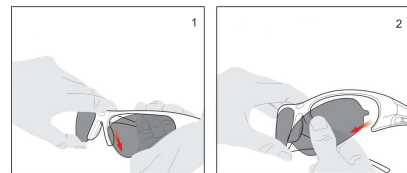
TP TC 019/2011

D8038006 Rev. 11 MSA Europe GmbH, Schlüsselstrasse 12, 8645 Raaperswil-Jona, Switzerland Product of Taiwan

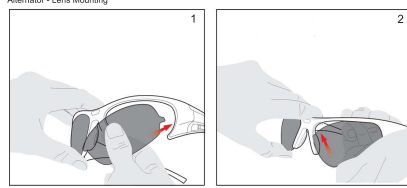
For local MSA contacts, please visit us at MSA'safety.com

Models: HERSPECTA FL250, 010, 1070, 1320, 1600, 2047W, 2320, 3000, GV1000, GH3001, GH2300, Alaska, Alternator, Altimeter, Blockz, ChemPro, FeatherFit, FlexChem, Metropol, Milan, Move, OverG, Racers, TecTor, Cogrid - EAC only

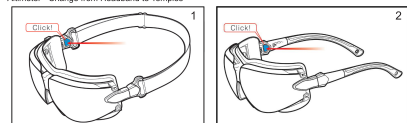
Alternator - Lens Removal



Alternator - Lens Mounting



Altimeter - Change from Headband to Temples



Eye Protectors

Storage and Maintenance: Store away from direct sunlight and corrosive chemicals. Clean with a soft cloth and warm soapy water or use wiping tissues.

Markings: According to EN166:2001 the safety eyewear can have the following markings on frame and lenses, explained below:

Table with 12 columns: S, 1.7, 1, F, EN166, 3, 9, K, N, CE, A, B, D, E, F, G, H

Table with 4 columns: A (Filtering properties), D (Optical class), G (Field of use), H (Manufacturer identification)

If the impact grade is not followed by the letter "T", then the eye-protector shall be only used at room temperature for protection against impact.

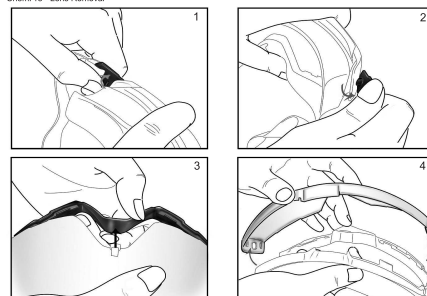
When different lenses and frames are combined, the following rules need to be observed:

- 1) frame and lens have markings (F), (B) or (A/T) different from each other, the lower level shall be assigned to the complete eye protector

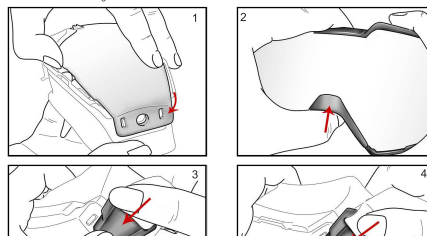
Attention: Eye-protectors against high-speed impacts more over standard optical/cosmetic spectacles may transmit impacts, thus creating a hazard to the wearer.

These eye protectors are CE certified by Notified Body 0194 - INSPEC International Limited, 56 Leslie Hough Way, Salford, Greater Manchester, M6 6AJ, United Kingdom

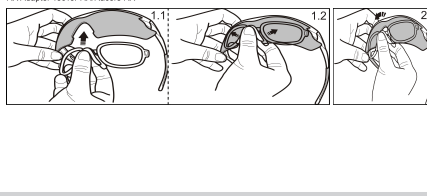
ChemPro - Lens Removal



ChemPro - Lens Mounting



RX Adapter TecTor/RX/Racers RX



Schutzbrillen

Lagerung und Pflege: Die Lagerung darf nicht in direktem Sonnenlicht oder in der Nähe aggressiver Chemikalien erfolgen.

Kennzeichnungen: Gemäß EN166:2001 kann der Augenschutz folgende Kennzeichnung auf dem Rahmen und der Scheibe beinhalten.

Table with 12 columns: S, 1.7, 1, F, EN166, 3, 9, K, N, CE, A, B, D, E, F, G, H

Table with 4 columns: A (Filtereigenschaften), D (Optische Klasse), G (Verwendung), H (Herstelleridentifikation)

Falls nach dem Stoßfestigkeitsgrad nicht der Buchstabe „T“ folgt, darf der Augenschutz nur bei Raumtemperatur zum Schutz gegen Stoßwirkungen verwendet werden.

Werden verschiedene Sichtscheiben und Rahmen kombiniert, müssen die folgenden Regeln eingehalten werden:

- 1) Wenn Rahmen und Sichtscheibe Kennzeichnungen (F), (B) oder (A/T) aufweisen, die voneinander abweichen, gilt der niedrigere Schutzgrad für den gesamten Augenschutz.

Attention: Ein mit 9 gekennzeichnete Rahmen muss zusätzlich zur Kennzeichnung (F), (B) oder (A/T) mit einer Sichtscheibe mit Kennzeichnung 9 ausgestattet werden.

Achtung: Augenschutz gegen Partikel mit hoher Geschwindigkeit, die über normalen Augenpartikel getragenen werden, können Stoßwirkungen übertragen und somit eine Gefahr für den Träger darstellen.

These eye protectors are CE certified by Notified Body 0194 - INSPEC International Limited, 56 Leslie Hough Way, Salford, Greater Manchester, M6 6AJ, UK (Verenigtes Königreich)

Протектори за очи

Съхранение и поддръжка: Съхранявайте далеч от пряка слънчева светлина и корозивни химически вещества.

Обозначения: Според стандарт EN166:2001 защитните очила могат да имат следните маркировки на рамката и лещите, описани по-долу:

Table with 12 columns: S, 1.7, 1, F, EN166, 3, 9, K, N, CE, A, B, D, E, F, G, H

Table with 4 columns: A (Свойства за филтриране), D (Оптически клас), G (Използване), H (Идентификация на производителя)

Ако елементът на визието не е последван от буквата "Т", протекторът за очи трябва да се използва единствено на стайна температура с цел защита срещу въздействи на виезие.

При комбинация на различни лещи и рамки трябва да съблюдавате следните правила:

- 1) ако рамката и лещата имат маркировки (F), (B) или (A/T), различни една от друга, най-протектора на очите трябва да е протектор по-ниско ниво

Attention: Протекторите за очи срещу високоенергийни частици, ноеми върхове стандартни защитни очила, могат да пренесат част от тях и така да предизвикат опасност за носещия.

These eye protectors are CE certified by Notified Body 0194 - INSPEC International Limited, 56 Leslie Hough Way, Salford, Greater Manchester, M6 6AJ, United Kingdom

Ochranné brýle

Skladování a údržba: Při skladování se vyhněte přímému slunečnímu světlu a korozivním chemickým látkám.

Obznamenání: Podle normy EN166:2001 mohou mít ochranní brýle na číselné označování označení:

Table with 12 columns: S, 1.7, 1, F, EN166, 3, 9, K, N, CE, A, B, D, E, F, G, H

Table with 4 columns: A (Filtrovací vlastnosti), D (Optická třída), G (Oblast použití), H (Označení výrobce)

Pokud za úrovní odolnosti proti nárazu není uvedeno písmeno „T“, měly by být brýle na ochranu proti nárazu používány pouze za běžné teploty.

Kombinace různých obrubů a zorníků, je třeba dodržovat následující pravidla:

- 1) Pokud mají obruby a zorníky označení (F), (B) nebo (A/T), která se vzájemně liší, je třeba kombinaci ochranných brýlí přičíst nižší úroveň.

Upozornění: Průhledná brýle na ochranu proti vysokochrýmým částicím nosěny přes běžné optiky, mohou přenášet nárazy, a tím pro uživatele představovat riziko.

These eye protectors are CE certified by Notified Body 0194 - INSPEC International Limited, 56 Leslie Hough Way, Salford, Greater Manchester, M6 6AJ, Velká Británie

Beskyttelsesbriller

Opbevaring og vedligeholdelse: Opbevar ikke i direkte sollys eller i nærheden af ætsende kemikalier.

Markeringer: Ifølge EN166:2001 kan øjenvern have markeringer på stel og glas, i nedenstående forklaring:

Table with 12 columns: S, 1.7, 1, F, EN166, 3, 9, K, N, CE, A, B, D, E, F, G, H

Table with 4 columns: A (Filteregenskaber), D (Optisk klasse), G (Anvendelsesområde), H (Identifikation af producent)

Hvis påvirkningsgraden ikke er efterfulgt af bogstavet "T", må beskyttelsesbrillerne kun anvendes ved rumtemperatur til beskyttelse mod støv.

Ved kombination af forskellige typer linser og stel, skal følgende regler overholdes:

- 1) Hvis stel og linse er markeret forskelligt med (F), (B) eller (A/T), skal det laveste trin gælde for hele øjenvernet

Attention: Beskyttelsesbriller mod højhastighedspartikler, der bæres over konventionelle briller, kan overføre slag og dermed udgøre en fare for brugeren.

These eye protectors are CE certified by Notified Body 0194 - INSPEC International Limited, 56 Leslie Hough Way, Salford, Greater Manchester, M6 6AJ, Storbritannien

Protección Ocular

Almacenaje y Mantenimiento: Almacenar en lugar protegido de la luz solar y de sustancias químicas corrosivas.

Marcado: De conformidad con la norma EN166:2001, las gafas de seguridad pueden tener las siguientes marcas en la montura y en las lentes, según se explica a continuación:

Table with 12 columns: S, 1.7, 1, F, EN166, 3, 9, K, N, CE, A, B, D, E, F, G, H

Table with 4 columns: A (Propiedades de Filtrado), D (Clase Óptica), G (Campo de Uso), H (Identificación del fabricante)

Si el grado de impacto no va seguido de la letra "T", el protector ocular sólo deberá utilizarse a temperatura ambiente para la protección contra impactos.

Cuando se combinan diferentes lentes y monturas, deben seguirse las siguientes reglas:

- 1) si la montura y lo lente tienen marcas (F), (B) o (A/T) diferentes entre sí, se asignará el nivel más bajo a todo el protector ocular

Attention: Los protectores oculares frente a partículas a alta velocidad que están colocados sobre gafas correctoras pueden transmitir los impactos, generando así un peligro para el usuario que los lleva puestos.

These eye protectors are CE certified by Notified Body 0194 - INSPEC International Limited, 56 Leslie Hough Way, Salford, Greater Manchester, M6 6AJ, Reino Unido

Silmänsuojaimet

Säilytys ja huolto: Säilytä silmänsuojaimet suojattuna suoralla auringonvalolla ja syövyttävillä kemikaaleilla.

Merkit: Standardin EN166:2001 mukaisesti suojatilan kehäyksissä ja linssissä voi olla merkit, joiden merkitykset on selitetty alla:

Table with 12 columns: S, 1.7, 1, F, EN166, 3, 9, K, N, CE, A, B, D, E, F, G, H

Table with 4 columns: A (Suodatusominaisuudet), D (Optinen luokka), G (Käyttöalue), H (Valmistajan tunnusluku)

Jos jokin väärmerkityksily ei seuraa kirjaint "T", silmänsuojaimia saa käyttää suojana iskua vastaan vain huoneämpötilassa.

Yhdistellessä erilaisia linssiä ja kehäyksiä on huomioitava seuraavat säännöt:

- 1) Jos kehäyksissä ja linssissä merkinnät (F), (B) tai (A/T) poikkeavat toisistaan, on silmänsuojaimien noudatettava alampaa tasoa

Huomio: Nopeilla hiukkasia vastaan silmänsuojaimet, jotka käytetään tavallisten silmälasien päällä, voivat aiheuttaa iskua, mikä saattaa aiheuttaa loukkauksia käyttäjän iholle.

These eye protectors are CE certified by Notified Body 0194 - INSPEC International Limited, 56 Leslie Hough Way, Salford, Greater Manchester, M6 6AJ, Suomi

Lunettes de protection

Stockage et Entretien: Stocker à l'abri de la lumière directe du soleil et des produits chimiques corrosifs.

Marquages: Conformément à la norme EN166:2001, la monture et les oculaires des lunettes de protection peuvent porter les marquages suivants, comme expliqué ci-dessous :

Table with 12 columns: S, 1.7, 1, F, EN166, 3, 9, K, N, CE, A, B, D, E, F, G, H

Table with 4 columns: A (Description du filtre), D (Qualité optique), G (Utilisation), H (Identification du fabricant)

Si le degré d'impact n'est pas suivi de la lettre "T", alors la protection oculaire devra uniquement être utilisée à une température ambiante pour garantir une protection contre les chocs.

Lorsque des oculaires et des montures différents sont combinés, il est recommandé d'observer les règles suivantes :

- 1) la monture et l'oculaire portent des marquages (F), (B) ou (A/T) différents les uns des autres, le niveau le plus bas est assigné à la protection oculaire complète

Attention: Les protections oculaires contre les particules circulant à grande vitesse portées par dessus des lunettes optiques standards peuvent transmettre les chocs, générant alors un risque pour l'utilisateur.

These eye protectors are CE certified by Notified Body 0194 - INSPEC International Limited, 56 Leslie Hough Way, Salford, Greater Manchester, M6 6AJ, Royaume-Uni

Гυαλιά προστασίας

Αποδόση και Συμβατότητα

Αποδόση: η ικανότητα να αποκλείει φυσικά και δομημένα χημικά, καθορίζει ένα μέτρο κλίσης ένδυμα και (επίσης) ορισμένα νερά ή χυμούς χρησιμοποιώντας (D813309), φάκος καθορίζεται υπό (D8241079), επίσης καθορίζεται ; ρευστά συσκευασία να (εξάσκηση παρτίδας (10032164).

Υπόσταση στο σκελετό

Επίσημο με την EN166:2001 τα γυαλιά προστασίας μπορούν να φέρουν στο πλαίσιο και τους φακούς τις ακόλουθες σημάδια που εξυπνούν τον χρήστη.

S	1	7	1	F	EN166	3	9	K	N	CE
A	B	D	E	F		G				H

A	Φακός/φάκοι, φακός	D	οπτικός κάτοπτρο	G	φακός της γυαλιάς
2	- UV, ζώνης επιπτώσεων στο χρώμα	4	- UV, ζώνης επιπτώσεων στο χρώμα	3	- UV, ζώνης επιπτώσεων στο χρώμα
2C	- UV, καθήν επιπτώσεων χρωμάτων	4	- UV, καθήν επιπτώσεων χρωμάτων	3	- UV, καθήν επιπτώσεων χρωμάτων
4	- IR (infrarouge)	4	- IR (infrarouge)	3	- IR (infrarouge)
5	- Ακτινοβολία ακτίνων IR	5	- Ακτινοβολία ακτίνων IR	5	- Ακτινοβολία ακτίνων IR
6	- Ακτινοβολία ακτίνων IR	6	- Ακτινοβολία ακτίνων IR	6	- Ακτινοβολία ακτίνων IR
B	- οπίσθιος φακός	B	- μέσο ενεργειακής αντίστασης	B	- μέσο ενεργειακής αντίστασης
1.2	(ακτινοβολία) σε 16	1.2	(ακτινοβολία) σε 16	1.2	(ακτινοβολία) σε 16
C	Αντανακλαστική Κατοπτρωτική	F	Υποδοχή φακούς	H	CE

Εάν μετά την κατηγορία προστασίας, δεν ακολουθεί ο χαρακτήρας "T", τότε το προστασιακό μέσο πρέπει να χρησιμοποιείται μόνο σε θερμοκρασίες που είναι οι προδιαγραφές για τις προστασίες αυτές.

Όταν υπάρχει συνδυασμός διαφορετικών φακών και πλαστικών, τότε θα χρησιμοποιούνται οι παρακάτω κωδικούς:

- 0 - στο πλαίσιο και ο φακός φέρουν την οπίσθια (FT), (BT) ή (AT), τότε το χρησιμοποιήσιμο επίπεδο αντοχής είναι το επίπεδο προστασιατικό που είναι το χαμηλότερο.
- 1 - όταν υπάρχει η επισημείωση 9 πρέπει να χρησιμοποιείται με φακούς που φέρουν τη επισημείωση 9, καθώς και η επισημείωση (FT), (BT) ή (AT).

Προειδο

Το προστασιακό μέσο για ορισμένα μεγέθη, πρόληψη, όταν φορούνται επίσης από κανονικά οφθαλμολογικά υγιή άτομα που υποβάλλονται στη διαδικασία της προέκτασης, μη αποτρέπει τη γρήγορη, να βλάπτει σε κίνηση.

Το υλικό, το οποίο μπορεί να βλάψει σε επαφή με το δέρμα του χρήστη μπορεί να προκαλέσει αλλεργικές αντιδράσεις σε άτομα που υποφέρουν από αλλεργία.

Αυτό πρέπει να γίνεται αντικατάσταση των χρησιμοποιούμενων φθαρμένων προστασιατικών μερών.

Αυτά τα προστασιατικά μέτρα έχουν πιστοποιηθεί από: Κοινωνικό Μηχανισμό Οργάνωση 0194 - INSPEC International Limited, 56 Leslie Hough Way, Salford, Greater Manchester, M6 6AJ, Ηνωμένο Βασίλειο

Οφθαλμική προστασία

Immazzamento e Manutenzione:

Conservare lontano dalle luci solari e aggressive chimici. Pulire con un morbido panno in acqua sapunata o usai: fazzoletti (D813309), liquido di pulizia per occhiali (D8241079), liquido disponibile liquido antiparrucche (PPPE) (10032164).

In accordo alla norma EN166:2001 gli occhiali di sicurezza possono riportare i seguenti contrassegni su montatura e lenti, spiegati in basso:

S	1	7	1	F	EN166	3	9	K	N	CE
A	B	D	E	F		G				H

A	Caratteristiche del film	D	Classe ottica	G	Campo d'impiego
2	- Filtri per ultravioletti (Blun)	4	- UV, ζώνης επιπτώσεων στο χρώμα	3	- UV, ζώνης επιπτώσεων στο χρώμα
2C	- Filtri per ultravioletti (Blun)	4	- UV, καθήν επιπτώσεων χρωμάτων	3	- UV, καθήν επιπτώσεων χρωμάτων
4	- Infrarossi (IR)	4	- IR (infrarouge)	3	- IR (infrarouge)
5	- Filtri solari antiabbiagliante (energia luminosa IR)	5	- Ακτινοβολία ακτίνων IR	5	- Ακτινοβολία ακτίνων IR
6	- Filtri solari antiabbiagliante (con funzione IR)	6	- Ακτινοβολία ακτίνων IR	6	- Ακτινοβολία ακτίνων IR
B	Classe schermo	B	Classe schermo	B	Classe schermo
1.2	(rischio schermo) da 16	1.2	(rischio schermo) da 16	1.2	(rischio schermo) da 16
C	Identificazione del produttore	F	Numero della norma	H	CE

Se il grado di impatto non è seguito dalla lettera "T", il dispositivo di protezione degli occhi deve essere usato esclusivamente a temperatura ambiente per la protezione dagli impatti.

Se si combinano diversi lenti e montature, è necessario osservare la seguenti regole:

- se la montatura e la lente presentano marcatore (FT), (BT) o (AT) diverse fra loro, il livello più basso deve essere assegnato al dispositivo di protezione degli occhi completo.
- se la montatura contraffaccata con il D deve essere combinata con una lente che presenta una marcatura 9, oltre alla marcatura (FT), (BT) o (AT).

Attenzione

- I dispositivi di protezione degli occhi di alta velocità indossati su normali occhiali correttivi possono trasmettere gli effetti, comportando quindi un rischio per l'utilizzatore.
- I materiali che possono venire a contatto con il pelle desulfurizzate potrebbero provocare reazioni allergiche negli individui sensibili.
- I dispositivi di protezione degli occhi graffiati o danneggiati devono essere sostituiti.

I presenti dispositivi di protezione degli occhi sono certificati da: organismo notificato 0194 - INSPEC International Limited, 56 Leslie Hough Way, Salford, Greater Manchester, M6 6AJ, Regno Unito

Leslie Hough Way, Salford, Greater Manchester, M6 6AJ, Regno Unito

Leslie Hough Way, Salford, Greater Manchester, M6 6AJ, Regno Unito

Leslie Hough Way, Salford, Greater Manchester, M6 6AJ, Regno Unito

Leslie Hough Way, Salford, Greater Manchester, M6 6AJ, Regno Unito

Leslie Hough Way, Salford, Greater Manchester, M6 6AJ, Regno Unito

Leslie Hough Way, Salford, Greater Manchester, M6 6AJ, Regno Unito

Leslie Hough Way, Salford, Greater Manchester, M6 6AJ, Regno Unito

Leslie Hough Way, Salford, Greater Manchester, M6 6AJ, Regno Unito

Leslie Hough Way, Salford, Greater Manchester, M6 6AJ, Regno Unito

Leslie Hough Way, Salford, Greater Manchester, M6 6AJ, Regno Unito

Leslie Hough Way, Salford, Greater Manchester, M6 6AJ, Regno Unito

Leslie Hough Way, Salford, Greater Manchester, M6 6AJ, Regno Unito

Leslie Hough Way, Salford, Greater Manchester, M6 6AJ, Regno Unito

Leslie Hough Way, Salford, Greater Manchester, M6 6AJ, Regno Unito

Leslie Hough Way, Salford, Greater Manchester, M6 6AJ, Regno Unito

Leslie Hough Way, Salford, Greater Manchester, M6 6AJ, Regno Unito

Leslie Hough Way, Salford, Greater Manchester, M6 6AJ, Regno Unito

Leslie Hough Way, Salford, Greater Manchester, M6 6AJ, Regno Unito

Leslie Hough Way, Salford, Greater Manchester, M6 6AJ, Regno Unito

Leslie Hough Way, Salford, Greater Manchester, M6 6AJ, Regno Unito

Leslie Hough Way, Salford, Greater Manchester, M6 6AJ, Regno Unito

Leslie Hough Way, Salford, Greater Manchester, M6 6AJ, Regno Unito

Leslie Hough Way, Salford, Greater Manchester, M6 6AJ, Regno Unito

Leslie Hough Way, Salford, Greater Manchester, M6 6AJ, Regno Unito

Leslie Hough Way, Salford, Greater Manchester, M6 6AJ, Regno Unito

Leslie Hough Way, Salford, Greater Manchester, M6 6AJ, Regno Unito

Leslie Hough Way, Salford, Greater Manchester, M6 6AJ, Regno Unito

Leslie Hough Way, Salford, Greater Manchester, M6 6AJ, Regno Unito

Leslie Hough Way, Salford, Greater Manchester, M6 6AJ, Regno Unito

Leslie Hough Way, Salford, Greater Manchester, M6 6AJ, Regno Unito

Leslie Hough Way, Salford, Greater Manchester, M6 6AJ, Regno Unito

Leslie Hough Way, Salford, Greater Manchester, M6 6AJ, Regno Unito

Leslie Hough Way, Salford, Greater Manchester, M6 6AJ, Regno Unito

Leslie Hough Way, Salford, Greater Manchester, M6 6AJ, Regno Unito

Leslie Hough Way, Salford, Greater Manchester, M6 6AJ, Regno Unito

Leslie Hough Way, Salford, Greater Manchester, M6 6AJ, Regno Unito

Leslie Hough Way, Salford, Greater Manchester, M6 6AJ, Regno Unito

Leslie Hough Way, Salford, Greater Manchester, M6 6AJ, Regno Unito

Leslie Hough Way, Salford, Greater Manchester, M6 6AJ, Regno Unito

Leslie Hough Way, Salford, Greater Manchester, M6 6AJ, Regno Unito

Leslie Hough Way, Salford, Greater Manchester, M6 6AJ, Regno Unito

Leslie Hough Way, Salford, Greater Manchester, M6 6AJ, Regno Unito

Leslie Hough Way, Salford, Greater Manchester, M6 6AJ, Regno Unito

Leslie Hough Way, Salford, Greater Manchester, M6 6AJ, Regno Unito

Leslie Hough Way, Salford, Greater Manchester, M6 6AJ, Regno Unito

Leslie Hough Way, Salford, Greater Manchester, M6 6AJ, Regno Unito

Leslie Hough Way, Salford, Greater Manchester, M6 6AJ, Regno Unito

Leslie Hough Way, Salford, Greater Manchester, M6 6AJ, Regno Unito

Veiligheidsbrillen

Opbouw en onderhoud

Niet oplossen in direct zonlicht, of in de buurt van agressieve chemicaliën. Reinigen met zachte doek en mild afwasmiddel of wisser papier D813309, - zuivering vloeistof D8241079. Tevens voorzichtig: Klar-Pilol Anti-Mist 10032164.

Identificatiekennmerken

Volgens EN 166:2001 kan oogbescherming de volgende markeringen op frame en lenzen hebben, die hieronder worden verklaard:

S	1	7	1	F	EN166	3	9	K	N	CE
A	B	D	E	F		G				H

A	Filtreigenschaften	D	Optische Klasse	G	Tragbereich
2	- UV, UV-Aarstrahlung	4	- UV, ζώνης επιπτώσεων στο χρώμα	3	- UV, ζώνης επιπτώσεων στο χρώμα
2C	- UV, UV-B arstrahlung	4	- UV, καθήν επιπτώσεων χρωμάτων	3	- UV, καθήν επιπτώσεων χρωμάτων
4	- IR (Infrarotstrahlung)	4	- IR (Infrarotstrahlung)	3	- IR (Infrarotstrahlung)
5	- Schutz vor ultravioletten Licht (UV-A)	5	- Ακτινοβολία ακτίνων IR	5	- Ακτινοβολία ακτίνων IR
6	- Schutz vor ultravioletten Licht (UV-B)	6	- Ακτινοβολία ακτίνων IR	6	- Ακτινοβολία ακτίνων IR
B	Schadung durch UV	B	- μέσο ενεργειακής αντίστασης	B	- μέσο ενεργειακής αντίστασης
1.2	(Schadung durch UV) bis 16	1.2	(Schadung durch UV) bis 16	1.2	(Schadung durch UV) bis 16
C	Identifikation des Fabrikanten	F	Standardnummer	H	CE

Indien het impactniveau niet wordt gevolgd door de letter "T", heeft alleen oogbescherming te worden gebruikt bij kamertemperatuur als bescherming tegen de schok.

Indien verschillende lenzen en monturen worden gecombineerd, moeten de volgende regels in acht worden genomen:

- wanneer de montuur en de lenzen van verschillende FT, BT of AT zijn voor montuur en lens verscheidend zijn, moet het laagste niveau aan de complete oogbescherming worden toegekend.
- een montuur aangelegd met 9 moet zijn voorzien van een lens met een 9 als aanvulling op de FT, BT of AT markering.

Atentie

- Oogbescherming tegen deeltjes met hoge snelheid die over standaard brillenlazen worden gedragen kunnen de impact doorgaan en zo een gevaar voor de ogen vormen.
- Het materiaal, dat in contact met de huid van de gebruiker kan komen, kan bij gevoelige personen tot allergische reacties leiden.
- Oogbescherming die beschadigd is of versleten moet worden vervangen.

Deze oogbescherming werd gecertificeerd door: Notified Body 0194 - INSPEC International Limited, 56 Leslie Hough Way, Salford, Greater Manchester, M6 6AJ, United Kingdom

Notified Body 0194 - INSPEC International Limited, 56 Leslie Hough Way, Salford, Greater Manchester, M6 6AJ, United Kingdom

Notified Body 0194 - INSPEC International Limited, 56 Leslie Hough Way, Salford, Greater Manchester, M6 6AJ, United Kingdom

Notified Body 0194 - INSPEC International Limited, 56 Leslie Hough Way, Salford, Greater Manchester, M6 6AJ, United Kingdom

Notified Body 0194 - INSPEC International Limited, 56 Leslie Hough Way, Salford, Greater Manchester, M6 6AJ, United Kingdom

Notified Body 0194 - INSPEC International Limited, 56 Leslie Hough Way, Salford, Greater Manchester, M6 6AJ, United Kingdom

Notified Body 0194 - INSPEC International Limited, 56 Leslie Hough Way, Salford, Greater Manchester, M6 6AJ, United Kingdom

Notified Body 0194 - INSPEC International Limited, 56 Leslie Hough Way, Salford, Greater Manchester, M6 6AJ, United Kingdom

Notified Body 0194 - INSPEC International Limited, 56 Leslie Hough Way, Salford, Greater Manchester, M6 6AJ, United Kingdom

Notified Body 0194 - INSPEC International Limited, 56 Leslie Hough Way, Salford, Greater Manchester, M6 6AJ, United Kingdom

Notified Body 0194 - INSPEC International Limited, 56 Leslie Hough Way, Salford, Greater Manchester, M6 6AJ, United Kingdom

Notified Body 0194 - INSPEC International Limited, 56 Leslie Hough Way, Salford, Greater Manchester, M6 6AJ, United Kingdom

Notified Body 0194 - INSPEC International Limited, 56 Leslie Hough Way, Salford, Greater Manchester, M6 6AJ, United Kingdom

Notified Body 0194 - INSPEC International Limited, 56 Leslie Hough Way, Salford, Greater Manchester, M6 6AJ, United Kingdom

Notified Body 0194 - INSPEC International Limited, 56 Leslie Hough Way, Salford, Greater Manchester, M6 6AJ, United Kingdom

Notified Body 0194 - INSPEC International Limited, 56 Leslie Hough Way, Salford, Greater Manchester, M6 6AJ, United Kingdom

Notified Body 0194 - INSPEC International Limited, 56 Leslie Hough Way, Salford, Greater Manchester, M6 6AJ, United Kingdom

Notified Body 0194 - INSPEC International Limited, 56 Leslie Hough Way, Salford, Greater Manchester, M6 6AJ, United Kingdom

Notified Body 0194 - INSPEC International Limited, 56 Leslie Hough Way, Salford, Greater Manchester, M6 6AJ, United Kingdom

Notified Body 0194 - INSPEC International Limited, 56 Leslie Hough Way, Salford, Greater Manchester, M6 6AJ, United Kingdom

Notified Body 0194 - INSPEC International Limited, 56 Leslie Hough Way, Salford, Greater Manchester, M6 6AJ, United Kingdom

Notified Body 0194 - INSPEC International Limited, 56 Leslie Hough Way, Salford, Greater Manchester, M6 6AJ, United Kingdom

Notified Body 0194 - INSPEC International Limited, 56 Leslie Hough Way, Salford, Greater Manchester, M6 6AJ, United Kingdom

Notified Body 0194 - INSPEC International Limited, 56 Leslie Hough Way, Salford, Greater Manchester, M6 6AJ, United Kingdom

Notified Body 0194 - INSPEC International Limited, 56 Leslie Hough Way, Salford, Greater Manchester, M6 6AJ, United Kingdom

Notified Body 0194 - INSPEC International Limited, 56 Leslie Hough Way, Salford, Greater Manchester, M6 6AJ, United Kingdom

Notified Body 0194 - INSPEC International Limited, 56 Leslie Hough Way, Salford, Greater Manchester, M6 6AJ, United Kingdom

Notified Body 0194 - INSPEC International Limited, 56 Leslie Hough Way, Salford, Greater Manchester, M6 6AJ, United Kingdom

Notified Body 0194 - INSPEC International Limited, 56 Leslie Hough Way, Salford, Greater Manchester, M6 6AJ, United Kingdom

Notified Body 0194 - INSPEC International Limited, 56 Leslie Hough Way, Salford, Greater Manchester, M6 6AJ, United Kingdom

Notified Body 0194 - INSPEC International Limited, 56 Leslie Hough Way, Salford, Greater Manchester, M6 6AJ, United Kingdom

Notified Body 0194 - INSPEC International Limited, 56 Leslie Hough Way, Salford, Greater Manchester, M6 6AJ, United Kingdom

Notified Body 0194 - INSPEC International Limited, 56 Leslie Hough Way, Salford, Greater Manchester, M6 6AJ, United Kingdom

Notified Body 0194 - INSPEC International Limited, 56 Leslie Hough Way, Salford, Greater Manchester, M6 6AJ, United Kingdom

Notified Body 0194 - INSPEC International Limited, 56 Leslie Hough Way, Salford, Greater Manchester, M6 6AJ, United Kingdom

Notified Body 0194 - INSPEC International Limited, 56 Leslie Hough Way, Salford, Greater Manchester, M6 6AJ, United Kingdom

Notified Body 0194 - INSPEC International Limited, 56 Leslie Hough Way, Salford, Greater Manchester, M6 6AJ, United Kingdom

Notified Body 0194 - INSPEC International Limited, 56 Leslie Hough Way, Salford, Greater Manchester, M6 6AJ, United Kingdom

Notified Body 0194 - INSPEC International Limited, 56 Leslie Hough Way, Salford, Greater Manchester, M6 6AJ, United Kingdom

Notified Body 0194 - INSPEC International Limited, 56 Leslie Hough Way, Salford, Greater Manchester, M6 6AJ, United Kingdom

Notified Body 0194 - INSPEC International Limited, 56 Leslie Hough Way, Salford, Greater Manchester, M6 6AJ, United Kingdom

Notified Body 0194 - INSPEC International Limited, 56 Leslie Hough Way, Salford, Greater Manchester, M6 6AJ, United Kingdom

Notified Body 0194 - INSPEC International Limited, 56 Leslie Hough Way, Salford, Greater Manchester, M6 6AJ, United Kingdom

Notified Body 0194 - INSPEC International Limited, 56 Leslie Hough Way, Salford, Greater Manchester, M6 6AJ, United Kingdom

Notified Body 0194 - INSPEC International Limited, 56 Leslie Hough Way, Salford, Greater Manchester, M6 6AJ, United Kingdom

Notified Body 0194 - INSPEC International Limited, 56 Leslie Hough Way, Salford, Greater Manchester, M6 6AJ, United Kingdom

Notified Body 0194 - INSPEC International Limited, 56 Leslie Hough Way, Salford, Greater Manchester, M6 6AJ, United Kingdom

Notified Body 0194 - INSPEC International Limited, 56 Leslie Hough Way, Salford, Greater Manchester, M6 6AJ, United Kingdom

Notified Body 0194 - INSPEC International Limited, 56 Leslie Hough Way, Salford, Greater Manchester, M6 6AJ, United Kingdom

Notified Body 0194 - INSPEC International Limited, 56 Leslie Hough Way, Salford, Greater Manchester, M6 6AJ, United Kingdom

Notified Body 0194 - INSPEC International Limited, 56 Leslie Hough Way, Salford, Greater Manchester, M6 6AJ, United Kingdom

Notified Body 0194 - INSPEC International Limited, 56 Leslie Hough Way, Salford, Greater Manchester, M6 6AJ, United Kingdom

Notified Body 0194 - INSPEC International Limited, 56 Leslie Hough Way, Salford, Greater Manchester, M6 6AJ, United Kingdom

Notified Body 0194 - INSPEC International Limited, 56 Leslie Hough Way, Salford, Greater Manchester, M6 6AJ, United Kingdom

Notified Body 0194 - INSPEC International Limited, 56 Leslie Hough Way, Salford, Greater Manchester, M6 6AJ, United Kingdom

Notified Body 0194 - INSPEC International Limited, 56 Leslie Hough Way, Salford, Greater Manchester, M6 6AJ, United Kingdom

Notified Body 0194 - INSPEC International Limited, 56 Leslie Hough Way, Salford, Greater Manchester, M6 6AJ, United Kingdom

Notified Body 0194 - INSPEC International Limited, 56 Leslie Hough Way, Salford, Greater Manchester, M6 6AJ, United Kingdom

Notified Body 0194 - INSPEC International Limited, 56 Leslie Hough Way, Salford, Greater Manchester, M6 6AJ, United Kingdom

Notified Body 0194 - INSPEC International Limited, 56 Leslie Hough Way, Salford, Greater Manchester, M6 6AJ, United Kingdom

Notified Body 0194 - INSPEC International Limited, 56 Leslie Hough Way, Salford, Greater Manchester, M6 6AJ, United Kingdom

Notified Body 0194 - INSPEC International Limited, 56 Leslie Hough Way, Salford, Greater Manchester, M6 6AJ, United Kingdom

Notified Body 0194 - INSPEC International Limited, 56 Leslie Hough Way, Salford, Greater Manchester, M6 6AJ, United Kingdom

Notified Body 0194 - INSPEC International Limited, 56 Leslie Hough Way, Salford, Greater Manchester, M6 6AJ, United Kingdom

Notified Body 0194 - INSPEC International Limited, 56 Leslie Hough Way, Salford, Greater Manchester, M6 6AJ, United Kingdom

Notified Body 0194 - INSPEC International Limited, 56 Leslie Hough Way, Salford, Greater Manchester, M6 6AJ, United Kingdom

Notified Body 0194 - INSPEC International Limited, 56 Leslie Hough Way, Salford, Greater Manchester, M6 6AJ, United Kingdom

Notified Body 0194 - INSPEC International Limited, 56 Leslie Hough Way, Salford, Greater Manchester, M6 6AJ, United Kingdom

Notified Body 0194 - INSPEC International Limited, 56 Leslie Hough Way, Salford, Greater Manchester, M6 6AJ, United Kingdom

Notified Body 0194 - INSPEC International Limited, 56 Leslie Hough Way, Salford, Greater Manchester, M6 6AJ, United Kingdom

Notified Body 0194 - INSPEC International Limited, 56 Leslie Hough Way, Salford, Greater Manchester, M6 6AJ, United Kingdom

Not